



ProSat-Solutions

D150FA DIAMOND FLY AWAY ANTENNA

- Robust and high performing
- Eutelsat type approved reflector (EA-A005)
- Ku, Ka, X, and DBS-Band capable
- Very easy to set up
- Small footprint
- Manual, assisted or autopointing
- stabilising legs included



The ProSat D150 FA is a powerful and efficient flyaway antenna which is capable of and approved for high power transmissions as well as it is suitable for integration of low power SSPA,s for VSAT operations. One hard case for Antenna base is complemented by light weight soft cases, making it IATA compliant.

Versions

The D150 FA comes in three different versions, depending on the need for assistance and automation, just choose the version that best suits your needs.

Manual

In the manual version it is simple and intuitive and assembly takes very short time. It offers bullet proof operation with its lack of complexity.

- Manual pointing
- No tools required for set up
- Course and fine adjustment on Azimuth and Elevation axis
- Very cost effective

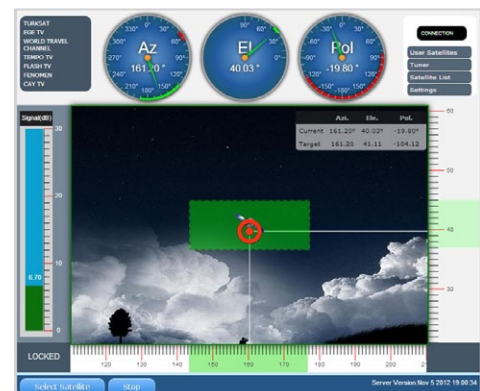
Software assisted

The inbuilt intelligence with sensors, database and browser based interface combines the best of two worlds. Manual pointing with help of the controllers intelligence makes satellite pointing simple easy.

- Onboard controller
- Internal GPS/Compass, DVB detection and sensors
- Includes all intelligence from vehicle based systems
- Controlled from Lap top, Android or iOS device
- Optional Spectrum analyzer integrated in the web interface

Autopointing

- Complete autopointing
- Silent motors
- Manual override on all axis
- Total remote control





ProSat-Solutions

D150FA DIAMOND FLY AWAY ANTENNA

RF SPECIFICATIONS

	Transmit	Receive
Frequency Band	13.75-14.5 GHz	10.95-12.75 GHz
Polarization	Linear Orthogonal	
Antenna Gain	44,5 dBi (typical)	43 dBi (typical)
Cross Polarization	<- 35 dB within 0.3° of boresight <- 30 dB within copular pattern relative to co-polar peak	<- 35 dB on boresight
Off Axis Gain	2.1° < θ < 35° @ 29-25log θ dBi 35° < θ < 130° @ -10 dBi 130° < θ < 180° @ +5 dBi	- - -
VSWR	1.3:1 Max	-
Feed Interface	WR-75	WR-75
Isolation	40 dB	>40 dB, excluding TX reject filter
Insertion Loss	0.2 dB	0.3 dB
Filter Rejection	Transmit reject >70 dB	

MECHANICAL SPECIFICATIONS

Antenna Geometry	Off-Set Front Feed	
Antenna Reflector Effective Aperture	Diagonal: 1.5m, Across flats: 1.2m	
Ports	2 (optionally 3 port)	
Elevation Range	10° - 80°	
Azimuth Range	± 181°	
Polarization Range	± 90°	
Weight and Dimensions	Main case: Hardcase 73x73x32cm, 32kg Reflector case: Softcase 73x72x23cm, 17kg Feed case: Softcase 150x30x17cm, 20kg	
Reflector Material	Carbon Fiber, Four-piece segmented "diamond" shaped reflector All external surfaces are primed and finished in two-pack polyurethane white paint.	

ENVIRONMENTAL SPECIFICATIONS

	Operational	Survival
Wind Load (with ballast)	75 km/h	160 km/h(stowed)
Wind Load (without ballast)	40 km/h	120 km/h(stowed)
Ambient Temperature	-20 ° C to +50 ° C	-40 ° C to +60 ° C
Humidity	% - %100	% - %100